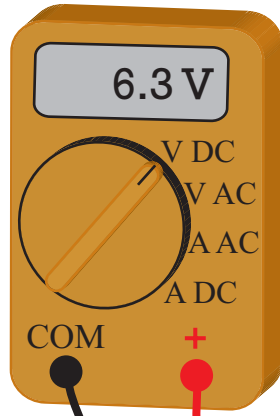
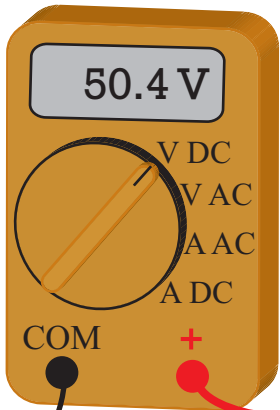
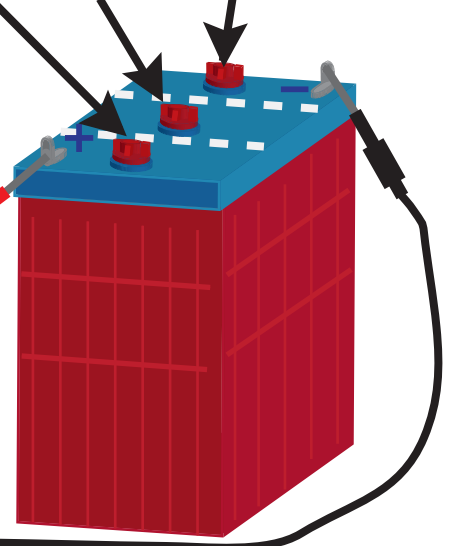


Battery Maintenance

Testing Voltage

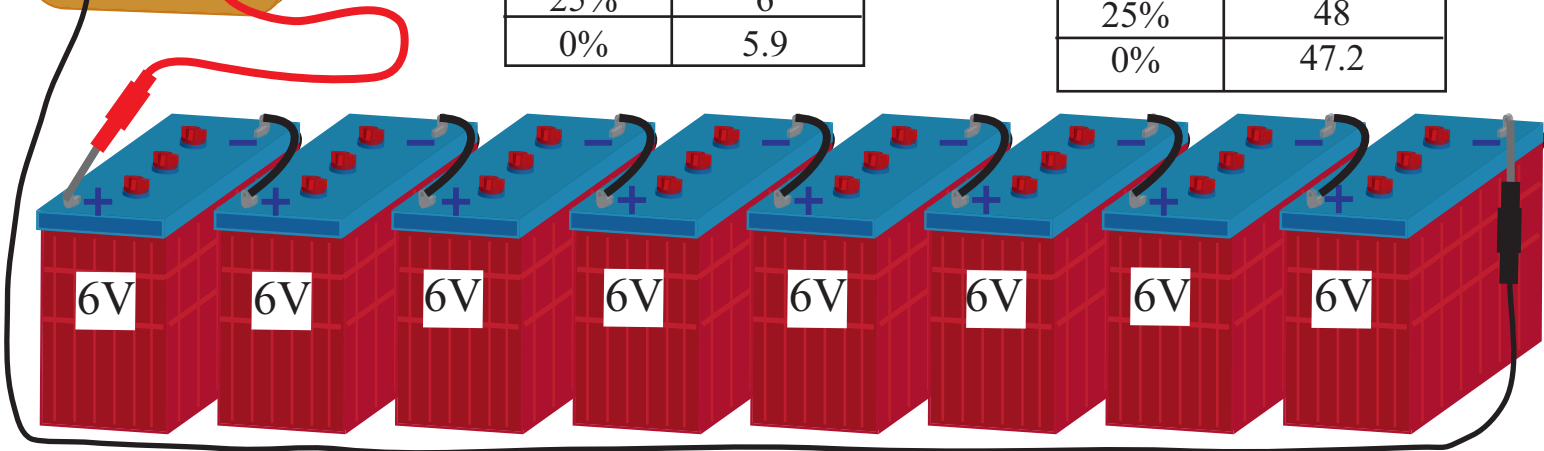


$2V + 2V + 2V = 6V$ nominal

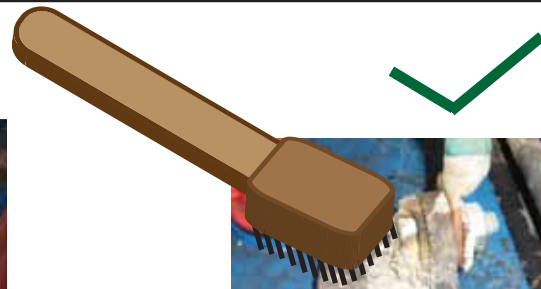


S.O.C.	Voltage: 6V
100 %	6.3
75 %	6.2
50%	6.1
25%	6
0%	5.9

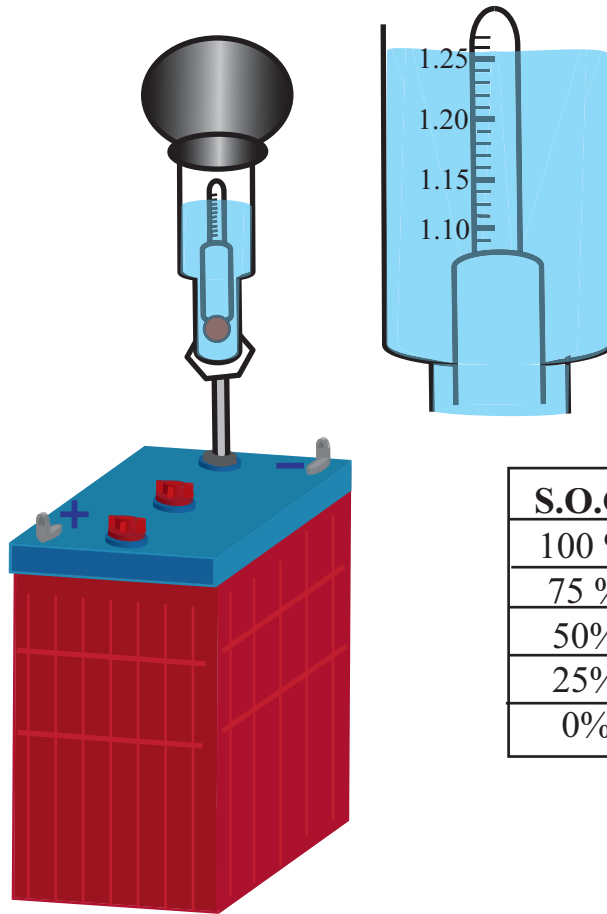
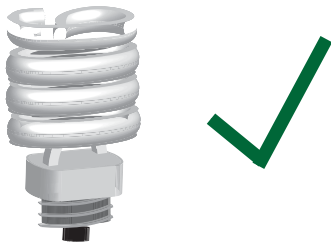
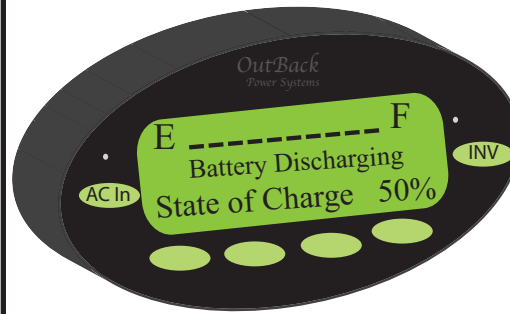
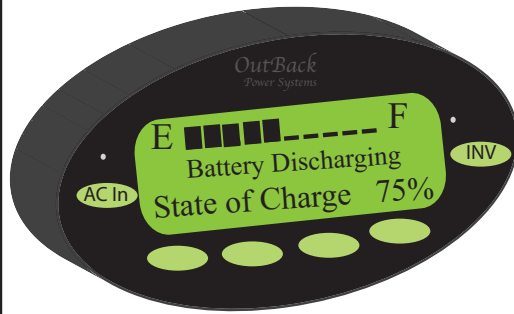
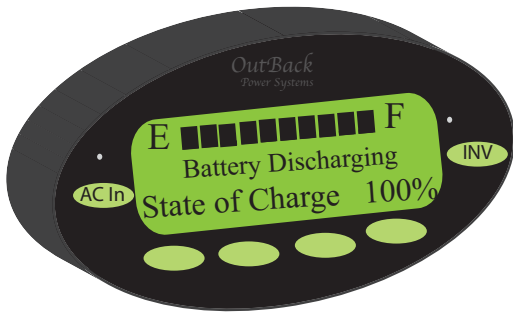
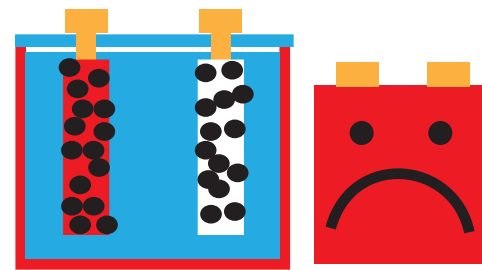
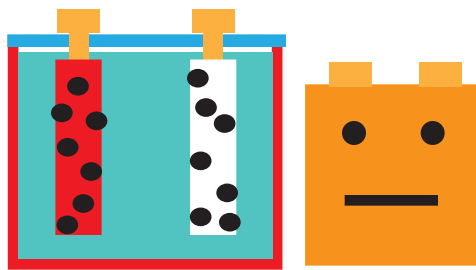
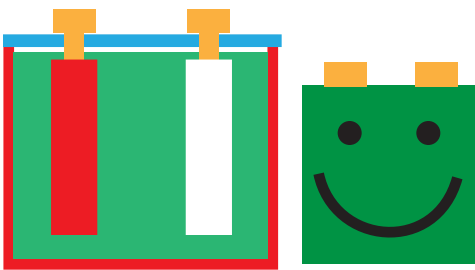
S.O.C.	Voltage: 48 V
100 %	50.4
75 %	49.6
50%	48.8
25%	48
0%	47.2



Cleaning Corrosion



State of Charge (S.O.C.)



S.O.C.	Specific Gravity
100 %	1.26
75 %	1.237
50%	1.2
25%	1.15
0%	1.10

Watering Batteries

